

EXPLORE ELBOW PARK

community collaboration



TABLE OF CONTENTS

WHO ARE WE?	1
PROJECT SUMMARY	3
PROJECT TIMELINE	4
PART 1: AMAZING RACE	5
PART 2: POTLUCK & REFRESHMENTS	6
PART 3: COMMUNITY MAPPING	7
PART 4: FINAL MAP PRODUCT	8
FINAL MAP: \$1000 SCALE UP	9
PROJECT CLEAN UP PLAN	10
APPENDIX	11
COMPLETE BUDGET	12
COMPLETE BUDGET (CONT'D)	13
RECOMMENDED LOCATIONS	14
OTHER COMMUNITY PROJECT OPTIONS	15
USEFUL RESOURCES	16

THE STUDENTS: WHO ARE WE?



DEREK CERCIELLO

Derek is an Architectural Technologist from Calgary, Alberta. Born and Raised in Calgary, Derek completed his Architectural Technologist diploma at SAIT Polytechnic in 2011. After working for over two years with clients and developers at Cedarglen Homes, Derek wanted to gain a greater understanding of city planning and the development process. This led Derek to enroll at the University of Calgary, where he is currently pursuing a Bachelor's Degree in Urban Studies and hopes to attain a Masters Degree in Architecture. In his free time, Derek likes to socialize with friends, watch Flames games, and go camping. In the future, Derek hopes to shape the skyline of Calgary with one of his own architectural designs.



EVAN DODDS

Evan is an aspiring architect with a fascination in the interaction between people and the redevelopment of their surrounding environment. He holds a Diploma of Architectural Technologies from SAIT Polytechnic and is currently in his last year of a Bachelor of Arts degree in Urban Studies from the University of Calgary. Currently employed as a mechanical designer, Evan has developed an appreciation for how buildings and their mechanical systems interact. Besides drawing buildings, Evan has developed a strong interest in GIS and cartography during his time at the University of Calgary. As an urbanist and future architect, Evan hopes to contribute to the beneficial development of Calgary.



JOEL LAYCOCK

Joel was born in Calgary, Alberta. He is currently in his 4th, and final, year of Urban Studies at the University of Calgary, and he is expected to graduate this upcoming spring. Joel is a proud Metis and Indigenous person and recently won a SAYIA (Southern Alberta Youth Indigenous Award) for his educational achievements in 2017. In his free time, Joel performs music at small venues around the city. Through his most recent experiences at the University of Calgary, Joel has worked closely with group members creating redevelopment plans in and around Calgary. Recently, Joel has been introduced to the realm of Urban Planning and hopes to pursue a career in this field, post graduation.

THE STUDENTS: WHO ARE WE?



HAILEY LEONARDIS

Hailey is a 4th year student at the University of Calgary working towards a combined degree in Urban Studies and Political Science with a minor in History. She completed a co-op work term with Big Lakes County, a municipal district in Northern Alberta, where she had the experience of writing administrative policies and taking part in a county-wide fundraising event. Being from the Northwest Territories, Hailey has found a love for large cities and she hopes to become an urban planner upon graduation.



JANINE PAHANG

Janine is a born and raised Calgarian in the 4th year of her Urban Studies degree at the University of Calgary. She completed a diploma in Architectural Technologies at SAIT Polytechnic and is currently completing an Interior Design certificate at Mount Royal University. She participated in a field school at the University of Calgary where she studied the urban and sustainable environment of alpine Europe. Although, her main interest is in creativity and design, and hopes to pursue work in that field. In Janine's free time, she enjoys hiking, attending concerts, and spending time with family. In the meantime, she is looking forward to spending the next year abroad in Australia this upcoming summer.



TAVISH PRATHER

Tavish is born and raised in Edmonton, Alberta. Growing up, he has been highly influenced by urban development and environmental management, which has led to his admiration for sustainable urban design and planning. He is completing his 4th year of Urban Studies at the University of Calgary, and has been an executive with the Urban Calgary Students Association for two years. His specific area of interest is in how land use plans and the physical topography of an area can impact urban design, and how this can influence the sustainability of the built environment. Tavish is focused on pursuing graduate school as he aspires to become an urban planner, and eventually a CEO for a development company.

PROJECT SUMMARY

The goal for this project is to create an interactive community map that highlights the cultural, historical, and natural assets of Elbow Park. Creating the community map will take place in two activities over one day during the summer of 2019. First, a community-wide amazing race will activate the residents to walk around the community, and engage them to think about the community's assets. Second, the mapping activity will create a physical, and/or digital interactive map for the Elbow Park Community Association to display for all residents and visitors to enjoy.

WHERE IS IT?



800 34 Ave SW, Calgary, AB T2T 2A3

The community wide scavenger hunt will take place on public property throughout the entire community - depending on the locations chosen for the activity. The community mapping and a potluck event will take place primarily at the community hall and Elbow Park.

HERITAGE DAY WEEKEND

August 3 - 5, 2019 marks Canada's Heritage Day long weekend. This project consists of learning about, then documenting, Elbow Park's own history and heritage. This is why we propose this event to be held on **Saturday August 3, 2019**. This weekend date coordinates perfectly with the purpose of the project. However, another weekend date may be selected if it suits best.



There are no special permits, bylaws or approvals required to host this event. The Community Association of Elbow Park is responsible for and has existing liability insurance for this community project.

EVENT PROMOTION



facebook



twitter



instagram



email



newsletter

PROJECT TIMELINE

From the start of the planning process to the final map result, this project will take place over the course of approximately two months. The amazing race, potluck, and community mapping activities will take place on the same day. However, preparation for the event will need to be done about a month prior to the scheduled day. The final map will be completed and displayed or distributed a few weeks following the event day.



PART ONE: AMAZING RACE

The Amazing Race activity serves to spark the imaginations of the participants to prepare them for the mapping activity. This activity will engage the participants to explore their community and garner ideas about what important locations to put on the final community map. Through volunteer efforts and community engagement, this activity will begin to help foster the community of Elbow Park with a sense of identity.

IMPLEMENTATION STEPS

STEP 1: Two weeks prior to the event

- Volunteers will look into the history and heritage of Elbow Park found in online archives.

STEP 2: One week prior to the event

- Volunteers will use the specific heritage locations and incorporate them into the questionnaire.
- Volunteers will need to visit the banks of the Elbow River and collect a medium sized rock for each location that is decided to be used for the amazing race activity. They will need to be painted using spray paint to be used as marking indicators for each location.

STEP 3: Day of the event

- Painted rocks and info packs will be placed at the decided locations, which will be what the community members are looking for when they arrive at the set locations during the event.
- Questionnaires help provide insight on the area and allow residents to learn about the heritage aspects of their community and prove the participant has read the info pack at the location, as that is where the answers to the questionnaire lie.
- Volunteers will also set up water stations at each of the locations around the community.

VOLUNTEER CAPACITY



Research history and heritage sites



Print and prepare info packs / Paint rocks / Set up locations and water stations / Clean up following the event

BUDGET

location history sheets: \$2

questionnaires: \$8

ziploc freezer bags: \$6

temporary marking spray paint: \$12

gift card prizes: \$80

TOTAL: \$108

MATERIALS



ziploc bags



golf pencils



questionnaire



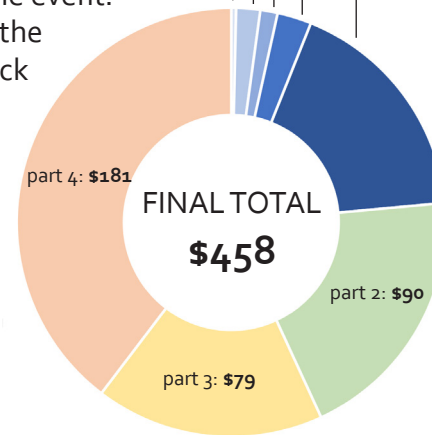
rocks



spray paint



water



PART TWO: POTLUCK & REFRESHMENTS

Once they are done traveling around their community and have finished/ or before they start sharing their ideas about their community through the map activity, residents are encouraged to bring food that can be shared by everyone in the community in a potluck event.

IMPLEMENTATION STEPS

STEP 1: Arrival after amazing race

- Community members arrive at community center after completing the amazing race.
- Members will either stop at home to pick up required food, or have it at the community beforehand.
- Table and chairs will be provided by the community where napkins, plates, food, garbage and recycling bins are also located.

STEP 2: During potluck event

- While residents eat volunteers will be collecting emails for the community email list.
- Prizes will be drawn for winners of the scavenger hunt, as predetermined beforehand.

STEP 3: Clean up

- At 6:00pm the event will end, giving volunteers time to clean up the community center and community park.

BUDGET

paper plates: \$16

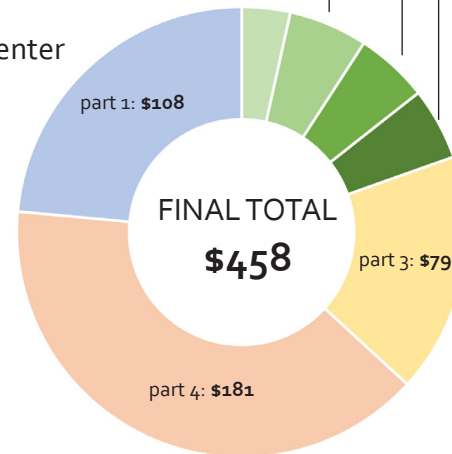
assorted cutlery: \$26

freezies: \$24

water: \$24

TOTAL: \$90

MATERIALS



VOLUNTEER CAPACITY



Set up tables and chairs / Distribute prizes / Clean up following the event

PART THREE: COMMUNITY MAPPING

The Community Mapping activity will help to identify the cultural, historic, natural, and other important locations for the participants. Participants will be tasked with identifying locations that they think are important in their community. After the initial locations are identified, then the community association will decide on what should be included in the final map.

IMPLEMENTATION STEPS

STEP 1: After participants leave community hall

- The volunteers will set up chairs and two tables to hold the blank maps, golf pencils, sticky notes, and colour coding dots for the mapping event.

STEP 2: Once participants arrive from amazing race

- Participants can either participate in the mapping activity first, or they can enjoy their potluck and refreshments first and come back to the map later.
- At the mapping station, each participant will have one coloured dot and they will place it on the map to represent the area of the the amazing race activity they enjoyed the most.

STEP 3: After the community mapping activity is complete

- the volunteers will clean up the community mapping supplies in community club house while one volunteer collects and properly files the responses from this activity for them to later provide to the cartographer.

VOLUNTEER CAPACITY



Set up tables and chairs / Supervise mapping / Distribute coloured dots /
Answer potential questions / Clean up following the event

BUDGET

sticky notes: **\$15**

golf pencils: **\$11**

large blank map: **\$48**

colour coding dots: **\$5**

TOTAL: \$79

MATERIALS



sticky notes



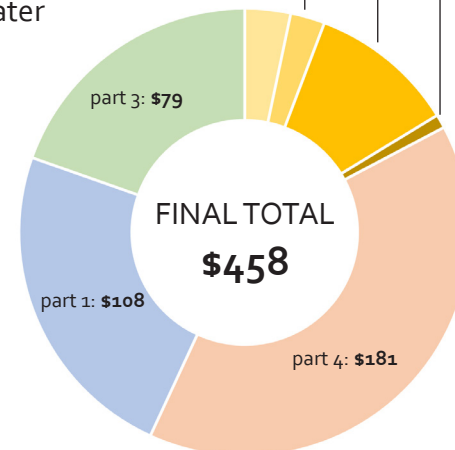
golf pencils



large map



coloured dots



PART FOUR: FINAL MAP PRODUCT

The final objective of the community mapping project is to create a map that can be used by the community and its visitors to show where the cultural, historic, natural, and other important locations are in Elbow Park. For this project a pamphlet-type map is suggested as the final map type. The locations identified by the community during the mapping activity will be narrowed down into a final selection by the community association. Each location will be provided with a description of the location including any historical or interesting facts about the location. A picture of the location will also be provide for the final map. The \$500 budget allows for the hiring of a cartographer to produce the document and an initial run of 100 map pamphlets.

IMPLEMENTATION STEPS

STEP 1: Compile locations

- Compile mapping activity maps and select the locations that will appear in the final asset map
- For each location, create a description that highlights any historical or interesting facts about that location. This may require research into the history of a location, for which research resources are listed at the end of this document.
- For each location, provide a picture of that location. Pictures can either be historical or contemporary.

STEP 2: Create the map

- Hire an experienced cartographer to create the map pamphlet.
- Elbow Park may identify a community member who is experienced in cartography
- A university student can be hired as their services can be retained for a smaller fee than a professional. Suggested contact information is listed at the end.
- Design the pamphlet in collaboration with the cartographer.
- Send the document to be printed

VOLUNTEER CAPACITY



Compile all chosen locations



Create historical write up on each location



Gather photographs for each location

BUDGET

pamphlet maps: **\$81**

cartographer: **\$100**

TOTAL: \$181

MATERIALS



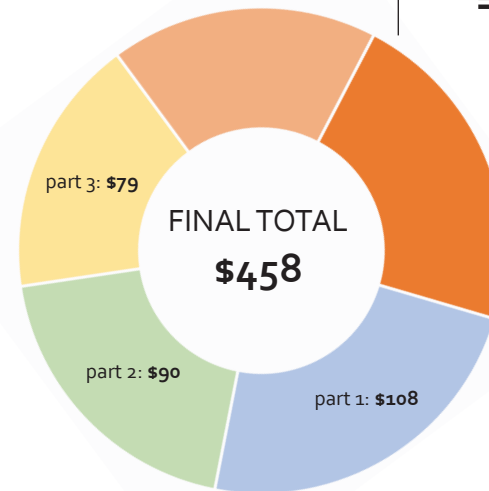
location photographs



location descriptions



cartographer



FINAL MAP: \$1000 SCALE UP

If this project received an extra \$500 towards this community, an online web map and a large format map plaque mounted in the community hall would be created. The purpose for the large format map in the community hall is that it creates a valued and permanent product dedicated to the heritage and historical aspects of Elbow Park. A web map would also be created so those heritage assets decided by the community would be more easily accessible for not only the residents of Elbow Park, but for anyone in Calgary who is interested in learning about what Elbow Park has to offer.

IMPLEMENTATION STEPS

STEP 1: Create the map

- The same cartographer can be retained to produce a large-scale map in addition to the map pamphlet.
- The suggest size for this map is 24x36 inches. The map will be printed and then taken to a firm that can plaque mount the map.

STEP 2: Create the web map

- Hire a person to develop the web map.
- Elbow Park may find a community member who is an experienced cartographer
- Use the same location descriptions as the pamphlet map and use multiple photos for each location.
- Publish the web map on the Elbow Park community association website.

\$1000 BUDGET

large format map: \$24

plaque mounting: \$152

web map: \$300

TOTAL: \$476

THREE MAP FORMATS



PAMPHLET MAP

Can be picked up and used to explore the community



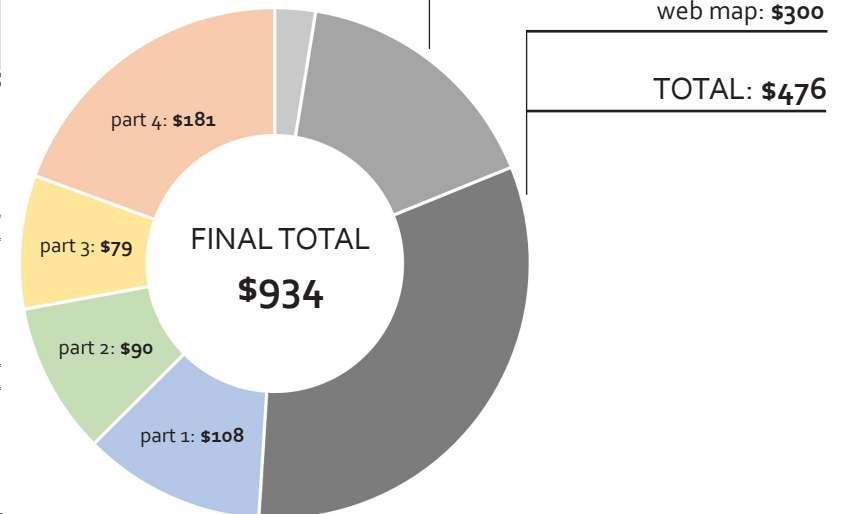
LARGE MAP

Can be mounted and hung in the community hall



WEB MAP

Can be put on the community association website for public use

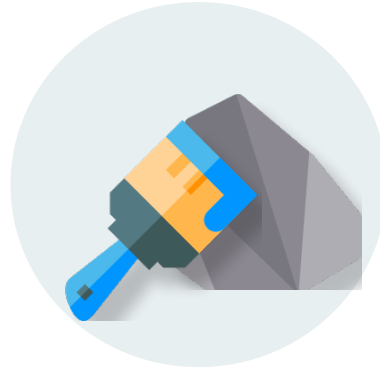


PROJECT CLEAN UP PLAN

The community association will be in charge of cleaning up all the garbage that is associated with the event.



Clean up info packs from each heritage location.



Clean up painted rocks and place them back along the river.



Clean up water stations located throughout the community.



Garbage, recycling and organic waste will be collected



Community hall will need to be cleaned after event.



Gather all tables and chairs and place them back in hall.

APPENDIX

COMPLETE BUDGET

Budget Items	Units	Unit Cost (CAD)	Total Cost (CAD)	Description
Explore Elbow Park-\$500				
Amazing Race Activity				
Location History Sheets / Question Sheet	15	\$0.11	\$1.65	Each location will have an info sheet that gives some history of the location.
Questionnaires	75	\$0.11	\$8.25	A questionnaire will be given to each 4-person team to answer and prove that they attended each location.
Ziploc Freezer Bags	1	\$5.97	\$5.97	38 medium-sized Ziploc freezer bags.
Rocks	-	-	-	Rocks are to be used for securing the location history sheets and are to be found along the Elbow River.
Temporary Marking Spray Paint	1	\$11.77	\$11.77	visible.
Gift Card Prizes	4	\$20.00	\$80.00	Stores to be decided by the Community Association.
Potluck & Refreshments				
Paper Plates	2	\$7.97	\$15.94	100 pack
Cutlery Assorted	2	\$12.97	\$25.94	300 pack
Freezies	2	\$11.97	\$23.94	60 pack
Water	10	\$2.37	\$23.70	24 per case
Community Mapping Activity				
Sticky Notes	1	\$14.99	\$14.99	1200 pack of 3" x 3"
Golf Pencils	1	\$11.29	\$11.29	144 per box
Large Blank Map	2	\$24.00	\$48.00	24" x 36"
Colour-Coding Dots	1	\$4.49	\$4.49	768 pack
Final Map Products				
Map Brochures	1	\$81.25	\$81.25	100 brochures
Mapper	5	\$20.00	\$100.00	Student mapper will be paid \$30/hour for 3 hours
Total			\$457.18	
Tax			\$22.86	
Sub Total			\$480.04	

COMPLETE BUDGET (cont'd)

Explore Elbow Park-\$1000				
Large Format Map	1	\$24.00	\$24.00	24 x 36 printed map
Plaque Mounted Map	1	\$152.00	\$152.00	24 x 36 mounted map in the standard/flat style.
Web Map	-	-	-	
Web Map Developer	12	\$25.00	\$300.00	Student will be paid \$30/hour for 10 hours.
Total			\$476.00	
Tax			\$23.80	
Sub Total			\$499.80	
Final Total			\$979.84	\$500 budget plus the additional units in the \$1000 budget.
Community Aid				
Tables	10	-	-	Tables to be provided by the community.
Event volunteers	4-10	-	-	Volunteers to organize, setup, and facilitate the event.
Location History Research Volunteers	2	-	-	The EXPLORE waypoints and final map points will require research into the history of those locations. Photos (historical or not) and a description will need to be created for each location.

RECOMMENDED HERITAGE LOCATIONS

We have come up with a few potential locations which could be used for the purpose of this project. These are merely suggestions and the community is not obligated to use this list for their Amazing Race activity, and can decide on their own and add more if they choose so. The amount of locations chosen for the amazing race activity is up to the community to decide.



Elbow River Suspension Bridge



The Glencoe Club



The Clubhouse



Elbow Park School



Christ Church



Rowers Statue

OTHER COMMUNITY PROJECT OPTIONS

Through the community engagement process with Elbow Park, two other ideas were proposed. They include the Starry Staircase and the Community Mural. Both of these projects fit within a \$500 budget and could be used in a future tactical urbanism project.



STARRY STAIRCASE

A simple lighting system would be implemented along your outdoor staircase located in Elbow Park. As this staircase sits on the hill shrouded under the canopy of trees, this community project aims to promote safety and security in a darkened area while providing a unique installment in a highly used area your community is proud to call yours.



COMMUNITY MURAL

A community mural was proposed to stand along the side of the Telus Building across the street from Elbow Park. This idea aims to act as a beautification project to enlighten an area that is unfavoured by community residents. The space would be activated by providing a community building event and could include all demographics of the community.

USEFUL RESOURCES

HISTORICAL RESEARCH

City of Calgary Inventory of Historic Resources:

<http://www.calgary.ca/PDA/pd/Pages/Heritage-planning/Inventory-of-evaluated-historic-resources.aspx>

Glenbow Museum Archives:

<https://www.glenbow.org/collections/archives/>

Calgary Public Library:

<https://calgarylibrary.ca/>

GEOGRAPHICAL MAPPING

If no capacity exists in the community for mapping work, the Geography Department at the University of Calgary can be contacted to inquire whether a student may be willing to offer their services.

Contact geography@ucalgary.ca